



 **MAXPEED**

We are MAXPEED

Maxpeed, with over 35 years of logistics expertise and experience, is a global comprehensive logistics company representing South Korea, working alongside our customers.



Global Headquarters

in Seoul, Republic of Korea



Establishment

Established in 1990



Maxpeed Offices in Korea

Seoul (HQ)
Busan
Incheon Airport



Logistics Experts in Korea

About 100 Staffs (as of January 2025)



Affiliates

Busan Crossdock (warehouse)
Incheon Crossdock (warehouse)
Ji-seung (warehouse)
E-max Logistics (Trucking & Logistics)
H&M Metal Warehousing Korea (LME Logistics Supplier)



Global Branches

CHINA

SHANGHAI
DALIAN
WEIHAI
TIANJIN
HONG KONG
SHENZHEN

VIETNAM

HANOI
HANOI AIRPORT
HAI PHONG
NAMDINH
DANANG
HO CHI MINH

BANGLADESH

CHITTAGONG
DHAKA

USA

LA
BOSTON

Maxpeed Services

Global Forwarding



Sea Freight

- One-stop service, including customs clearance and truck transport
- Highly competitive FCL solution services



Air Freight

- Comprehensive air freight forwarding services
- Specialized services for dangerous goods, heavy cargo, and perishable goods



Multi-Modal Transportation

- Sea & Air transport
- Ferry & Truck transport



LCL Consolidation

- No.1 NVOCC
- Dedicated web-based cargo tracking system
- Strong transshipment process



Project & Special Cargo

- Heavy cargo, oversized cargo, and large bulk cargo transport
- Dedicated team of experienced professionals
- Company-owned Super-Rack containers



Cross Trade

- Dedicated team providing best SVC solution

Domestic Logistics



Logistics Center

- Warehouse in FTZ & Bonded area
- CFS services for LCL, refrigerated, and dangerous goods storage



Domestics Distribution Center

- Located within 1 hour distance to Seoul
- Customs clearance, Storage and Transport to local market
- Transport service for e-commerce products



Domestics Distribution Cente

- Container, bulk, and special cargo transport services



Value Added Service

- Lashing, inspection, and customs clearance for special and oversized cargo

MAXPEED History

Since its establishment in 1990, Maxpeed has been continuously expanding its global network and strengthening its logistics competitiveness to meet diverse customer needs.

2020~ **2023** Acquired Excellent Shipping company and Shipper Certification
2022 H&M Metal Warehousing Korea incorporated into Maxpeed Group
2021 Established Jiseung Co., Ltd.
2020 30th Anniversary

2010 **2018** Acquired ISO 9001 certification
2017 Established Incheon Cross-dock Co., Ltd.
2016 Established Maxpeed Co., Ltd. in Hong Kong
2012 Acquired AEO certification

2000 **2008** Established Maxpeed Hanoi & Ho chi Minh Co., Ltd. In Vietnam
2007 Established Busan Cross-dock Co., Ltd.
2005 Established Blue Scholarship Foundation
2004 Established E-max Logistics Co., Ltd.
Established Maxpeed Shanghai Co., Ltd. in China
2000 Established Embassy Freight Systems in USA

1990 **1997** Established Maxpeed Bangladesh
1990 Established Maxpeed Co., Ltd.

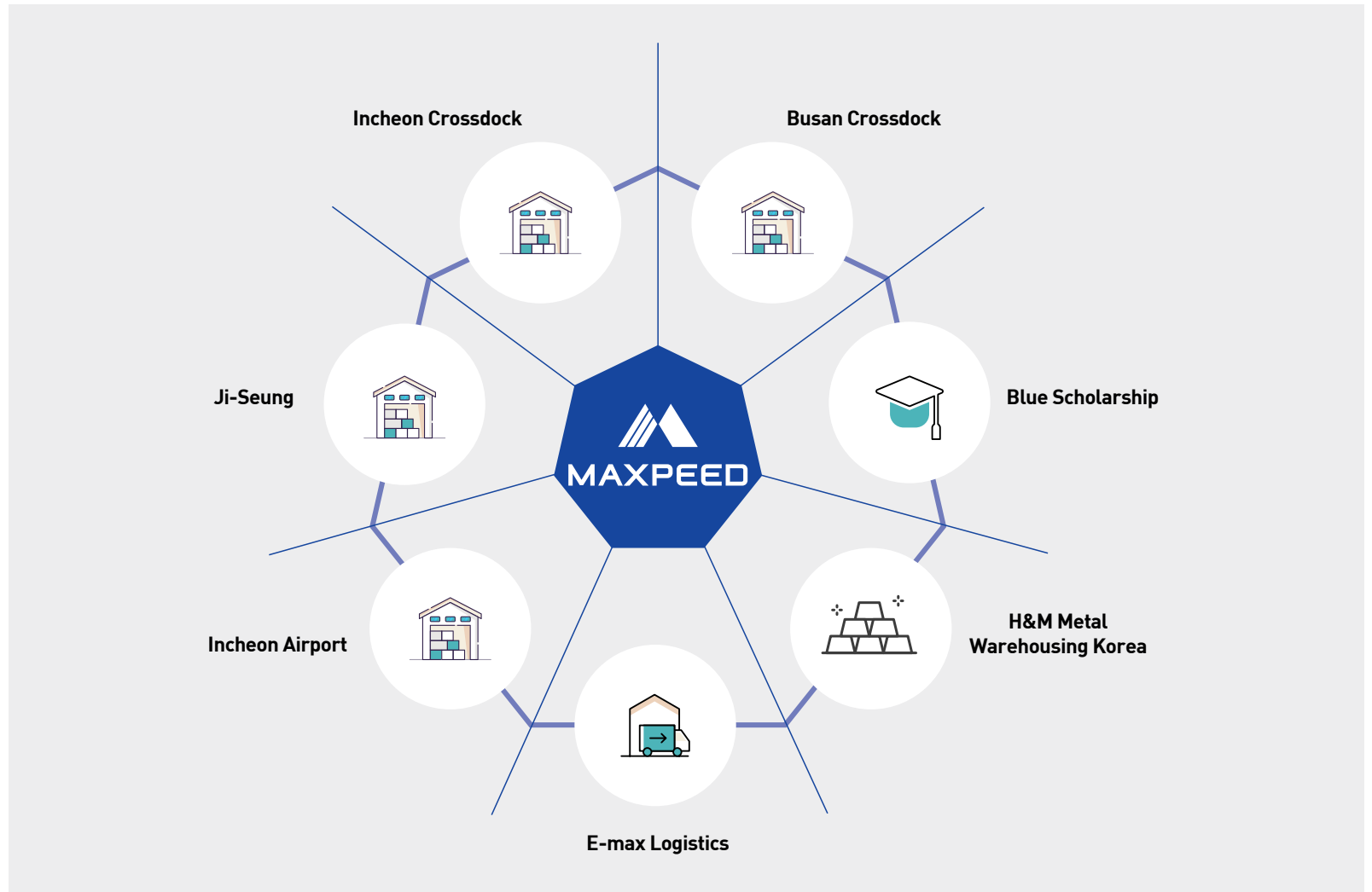
MAXPEED Affiliates

To provide comprehensive logistics services without limitations, Maxpeed operates various affiliates, including warehouses and 3PL services, to expand logistics competitiveness. In addition, the company actively practices ESG management by reinvesting a portion of its profits into society through the Blue Scholarship Foundation.

Key Logistics Hubs

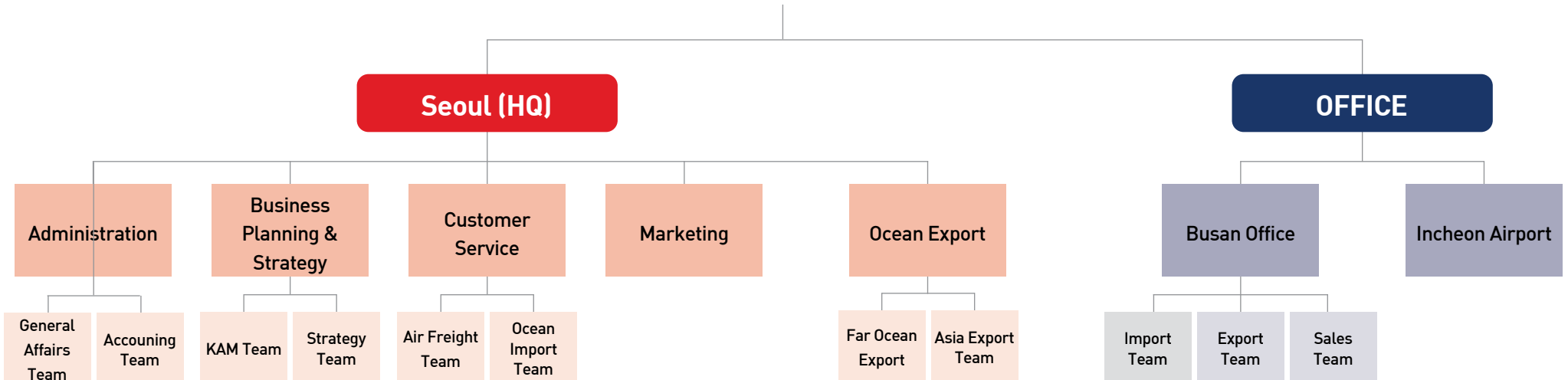


“Maxpeed is steadily advancing toward its goal of becoming Korea’s No.1 comprehensive logistics company and a major logistics hub”

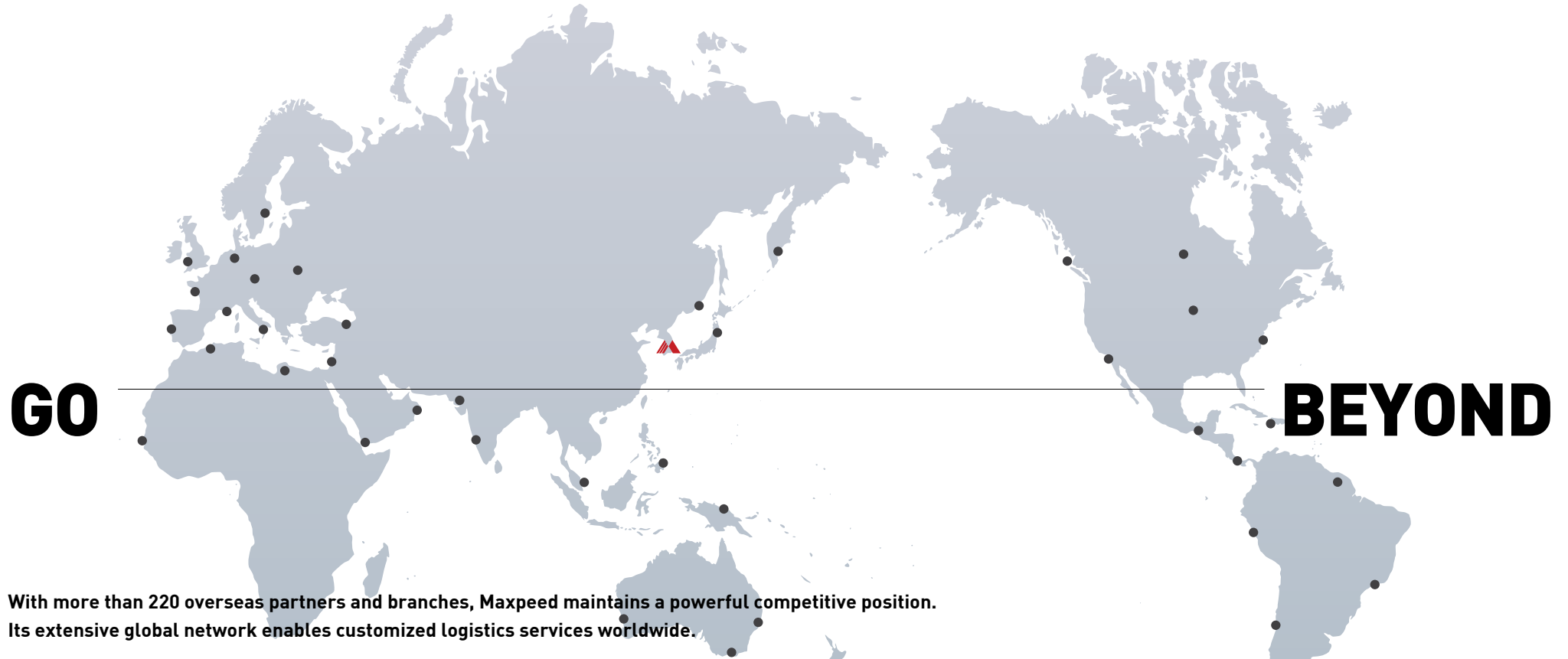


MAXPEED Organization

Every member of Maxpeed is making steady progress toward the goal of becoming the world's No.1 comprehensive logistics company.



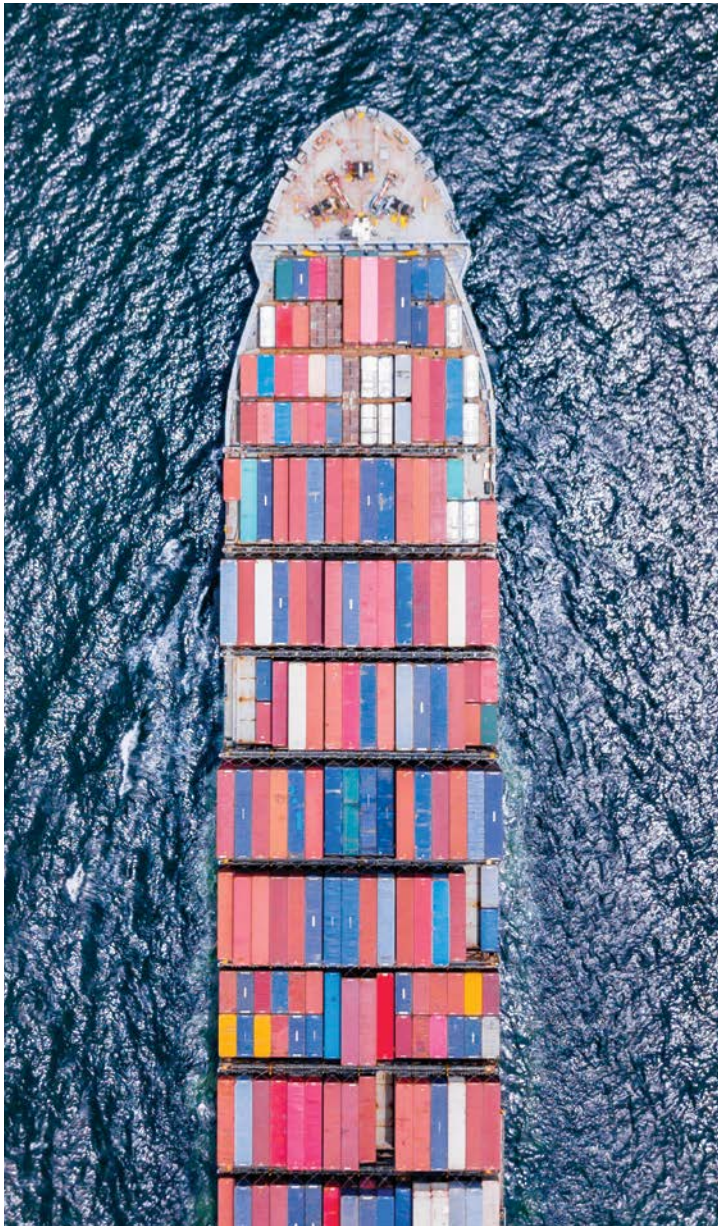
MAXPEED Network



With more than 220 overseas partners and branches, Maxpeed maintains a powerful competitive position. Its extensive global network enables customized logistics services worldwide.

ASIA	EUROPE	AMERICA	OCEANIA	MIDDLE EAST	AFRICA
CHINA	BELGIUM	U.S.A	AUSTRALIA	DUBAI	SOUTH AFRICA
JAPAN	UNITED KINGDOM	CANADA	NEW ZEALAND	ISRAEL	EGYPT
INDIA	GERMANY	MEXICO	FIJI	SAUDI ARABIA	GHANA
VIETNAM	FRANCE	CHILE	SOLOMON	BAHRAIN	KENYA
SINGAPORE	NETHERLANDS	PERU	NEW CALEDONIA	JORDAN	MADAGASCAR
INDONESIA	ITALY	COLOMBIA	PAPUA NEW GUINEA	KUWAIT	MAURITIUS
THAILAND	TURKEY	BRAZIL	⋮	QATAR	⋮
MALAYSIA	PORTUGAL	ARGENTINA		⋮	
PHILIPPINES	SPAIN	COLON FREE ZONE			
CAMBODIA	RUSSIA	⋮			
⋮	⋮				

Sea Freights



The First Generation of LCL Consolidators in Korea

- Maxpeed provides over 100 direct LCL consolidation services.
- Maxpeed has a strong T/S system using 'via Busan' for LCL cargoes.
- Maxpeed owns export & import LCL CFS in Incheon and Busan ports.

A Strong Position of FCL Services in Korea

- Maxpeed provides optimized logistics services based on the specific type and nature of each cargo.
- Maxpeed collaborates with strategic shipping carriers to secure competitive rates and ensure reliable space availability.
- Maxpeed provides cargo tracking service through our *CRM system. (*: customer relationship management)

A Expertise in Special Cargoes Logistics

- Maxpeed operates a dedicated oversized cargo team to offer customized logistics services for *OOG(*: out of gauge) and special project cargoes.
- Maxpeed owns *Super-Rack containers designed to handle OOG cargoes effectively.
- Maxpeed operates D/G storage and refrigerated facilities at Busan new Port, enabling to offer customized logistics services.



Air Freights



Leveraging the strategic advantages of Incheon Airport

- Incheon Airport serves as a hub in Asia, offering excellent connectivity to major cities around the world. Maxpeed leverages this advantage to provide fast and efficient logistics services.
- Maxpeed has its own warehouse at Incheon Airport, enabling us to provide customized services tailored to each import and export air freight client.
- Maxpeed offers integrated logistics solutions that combine air and sea freight, based at Incheon Airport.

Maxpeed's Expertise in Air Freight

- Maxpeed has the capability to deliver our clients' cargo to destinations within an average of 24-48 hours.
- Maxpeed provides customized logistics services tailored to the characteristics and specifications of various cargo types, including perishables, hazardous materials, and project cargo.

Expertise in Special Cargoes Logistics

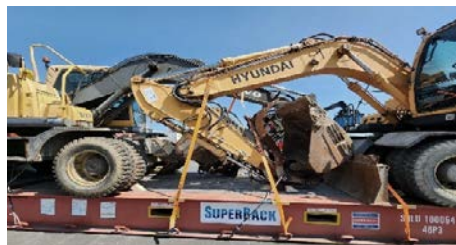
Based on over 35 years of logistics expertise, we deliver tailored solutions designed to meet the diverse needs of our clients' cargo.

Our extensive experience enables to understand the requirements of various industries, ensuring that each shipment is handled with the utmost care and efficiency.

Project Cargoes



Construction Machines



Metal Products



Others

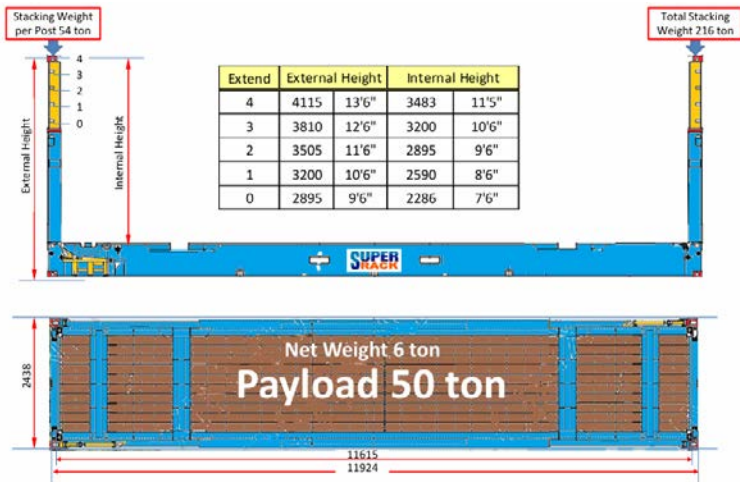


Expert Oversized Cargo Solutions with Our Super-Rack Containers

Maxpeed owns Super-Rack containers designed to handle a large volume of out-of-gauge (OOG) and project cargo efficiently.

With Super-Rack containers, Maxpeed effectively address the high costs and dead space issues associated with traditional flat rack containers.

Dimension



Super-Rack can be used on Bulk and Container Ships

1) On Bulk Vessels – making artificial decks



Maxpeed Super-Rack & Cargo Loading Pictures



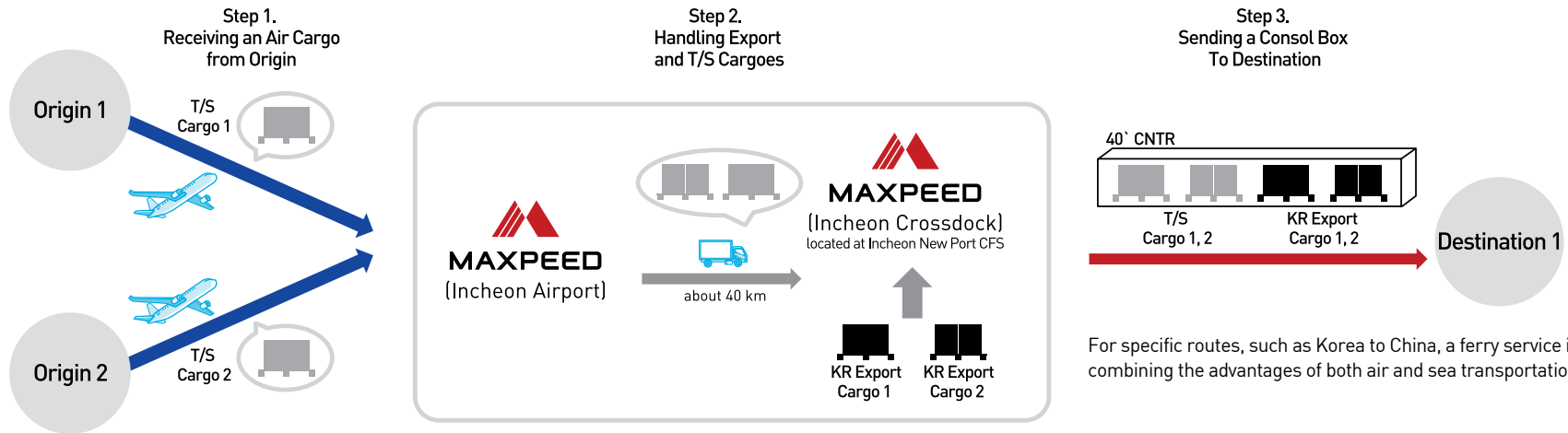
2) On container Ships – OOG Cargoes



T/S Specialist

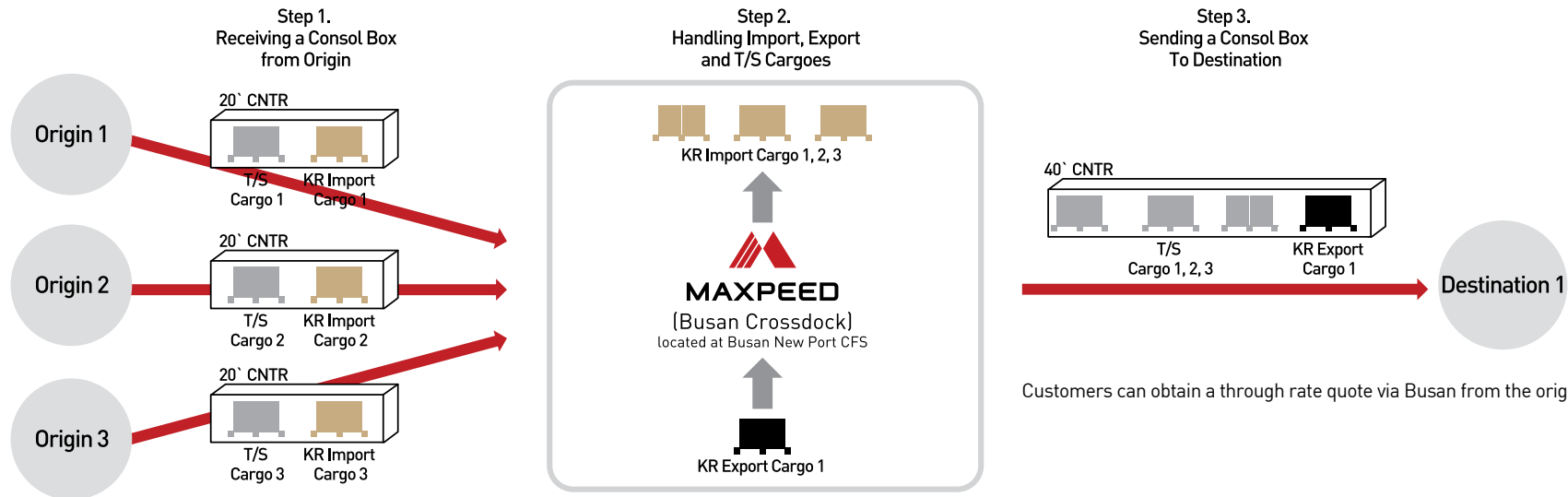
1 SEA&AIR Transshipment

With our Incheon Airport office and Cross-dock, we optimize sea & air transshipment logistics, reducing costs and transit time.



2 LCL transshipment

Our affiliate, Busan Cross-dock, maximizes Busan Port's advantages as Northeast Asia's leading LCL T/S hub.



Maxpeed Warehouse

INCHEON CROSSDOCK

- Incheon New port Logistics Center

Warehousing, Logistics SVC, Export & Import CFS
Cargo Safety and Security System Retention

• Main Cargo Items

Electronics, machinery, construction materials



Land Area	10,318 m ²
Building Area	3,349 m ²
Floor Area	6,719 m ²

JI-SEUNG

- Anseong Logistics Center

Warehousing & Distribution Center, 3PL Logistics SVC

• Main Cargo Items

Beverage (Wine, Beer, Water, Other Drinks), Flour



Land Area	22,295 m ²
Building Area	8,064 m ²
Floor Area	24,617 m ²

INCHEON AIRPORT

- Incheon Airport Logistics Center

Export/Import cargo Storage, Domestic & Bonded transportation,
Cargo Inspection, Quarantine Services, Airport Services for Export/Import

• Main Cargo Items

Electronics, machinery, construction materials



Land Area	1,240 m ²
Building Area	772 m ²
Floor Area	655 m ²

BUSAN CROSSDOCK

- Busan New Port Logistics Center

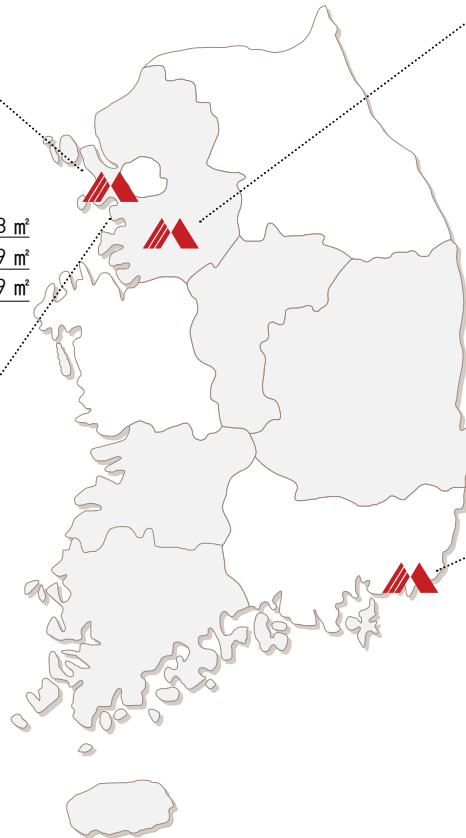
Warehousing, Logistics SVC, Export & Import CFS
Operation of Hazardous Materials and Refrigerated
Warehouses

• Main Cargo Items

Electronics, machinery, construction materials, ingots,
chemicals



Land Area	30,991 m ²
Building Area	16,701 m ²
Floor Area	15,664 m ²



Transportation & Logistics Solution



E-MAX LOGISTICS

- Domestic Transportation

Established

2004

Location

3Fl 55, Suyeong-ro 65beon-gil, Nam-gu, Busan, Republic of Korea

920, Incheonsinhang-daero, Yeonsu-gu, Incheon, Republic of Korea

Services

Over 500 contractors operate trucks through a franchise network logistics system

H&M METAL WAREHOUSING KOREA CO., LTD.

- Authorized Logistics Provider for LME

Established

2008

Location

Rm.722, 7Fl, Changgang Bldg., 86, Mapo-daero, Mapo-gu, Seoul

Services

Storage, handling, and distribution of non-ferrous metals

Metal warehousing services

Customized storage solutions for minor and previous metals, various minerals, and steel products



VIETNAM

- Maritime forwarding, air cargo, consolidation, and customs clearance
- Inland transportation and comprehensive logistics services operated by major inland logistics bases
- Hanoi: Operation of Airport Direct Office, Customs Clearance, and Transportation Task Force
- Ho Chi Minh: Customs clearance and direct container transport vehicle services

MAXPEED HANOI CO.,LTD

ADD Unit 3, 5th Floor, Building N01-T2, Diplomatic Resident Complex, Bac Tu Liem Dist, Hanoi City, Viet nam

TEL 84-24-3755-8393

MAXPEED HANOI AIRPORT OFFICE

ADD Room 304, 3rd FL, NTS Building, Phu Cuong ward, Soc Son Dist, Ha Noi, Viet Nam

TEL 84-904-973-000

MAXPEED HANOI HAI PHONG OFFICE

ADD Unit 608, TD Plaza ,20A Le Hong Phong Str ,Ngo Quyen dist, Hai Phong , Viet nam

TEL 84-225-361-4217

MAXPEED HANOI NAM DINH OFFICE

ADD No 1 Tran Anh Tong Str, Hoa Vuong, Loc Vuong dist, Nam Dinh, Viet Nam

TEL 84-2283-555-389

MAXPEED HANOI DA NANG OFFICE

ADD Room 5.7, 5th FL, Danabook Building, 76-78 Bach Dang Rd, Hai Chau Dist, Da Nang, Viet Nam

TEL 84-236-530-289

MAXPEED SVN CO.,LTD

ADD 7FL, Hai Au Bldg. 39B trung Son St.4 Ward, Tan Binh Dist. Ho chi Minh City, Viet nam

TEL 84-28-3848-9177

CHINA

- Marine Forwarding & Consolidation and Air Freight Services
- Customs Clearance & Inland Linkage Services in China
- Shanghai Pudong Airport Direct Office Operation

MAXPEED SHANGHAI

ADD 14/F Harbour Ring Huangpu Center, No.98 Liu He Road, Shanghai China 200001

TEL 86-21-6012-9092

MAXPEED WEIHAI

ADD 1/F Weidong Ferry, 36-2 Donghai Road Economic and Technology Development Area, Weihai, Shangong Province, China

TEL 86-631-5961335

COMAX TIANJIN CO.,LTD

ADD RM 1504, Huijin Center, No.65, Dagu North Road, Heping District, Tianjin China

TEL 86-22-2331-3227

COMAX DALIAN CO.,LTD

ADD Room 2513 New World Building Renmin Road Zhongshan District, Dalian China

TEL 86-411-8270-2116

MAXPEED (HONG KONG)

ADD Unit 17, 43F, one midtown, No.11 Hoi Shing Road, Tsuen Wan, Hong Kong

TEL 85-2666-6576

SHENZHEN

ADD 7A Int'l Trade Commercial Bldg, 3009 Nanhu Road, Luohu District, Shenzhen China 518001

TEL 86-755-82355193

BANGLADESH

- Maritime, Air, Consolidation, Warehouse, Inland Transportation
- More than 20 Years of Logistics Expertise
- Comprehensive Logistics Service Provision

MAXPEED CARGO(BD) LTD

Chittagong

ADD Sultan Chamber(3rd Floor) 163 SK Mujib road Agrabad, Chittagong, Bangladesh

TEL 88-031-720623

Dhaka

ADD 10 Kazai Nazrul Islam Avenue

Jahangir Tower, 05F, Kawran Bazar Dhaka-1215-Bangladesh

TEL 88-01711-541841

USA

EMBASSY FREIGHT SYSTEMS USA, INC

Boston(Head office)

ADD 100 Corporate Place SUITE 204 Peabody, MA 01960

TEL 1-671-569-5180

Los Angeles

ADD LA 9133 S La Cienega Blvd. Ste 225 Inglewood, CA 90301

TEL 1-310-417-4909



서울특별시 마포구 새창로 7 (도화동, SNU장학빌딩 3층)
3rd Fl, SNU Building, 7 Saechang-ro, Mapo-gu,
Seoul, Republic of Korea
TEL. 82-2-3708-2200 FAX. 82-2-773-1616
WWW.MAXPEED.CO.KR